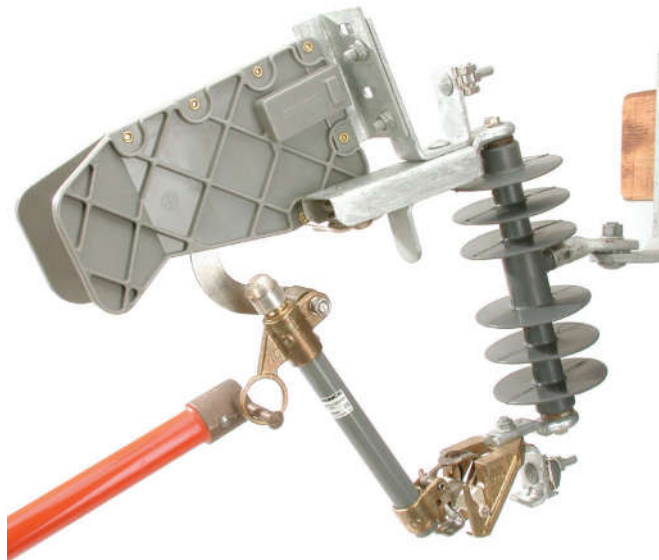


## Type C-Polymer LOADBREAK Cutouts with Arc Chute Interrupter

15kV - 110kV LIW (BIL)

15/27kV - 125/150kV LIW (BIL)

20/34.5kV - 150kV LIW (BIL)



### Application

The Type C-Polymer Loadbreak Cutout is available for application on 15 and 27 kV distribution systems. The addition of the arc chute expands the flexibility of the Chance protective devices family by providing loadbreak capability for cutouts and disconnect solid blade units. The loadbreak cutout provides short circuit protection to utility lines with the added feature of a loadbreaking function.

The loadbreak cutout is applicable for transformer and capacitor bank switching or line sectionalizing. Loadbreak cutouts provide protection from overloads that just melt the fuselink through the maximum interrupt capacity of the fuseholder. They also provide loadbreak capability through 300 amperes.

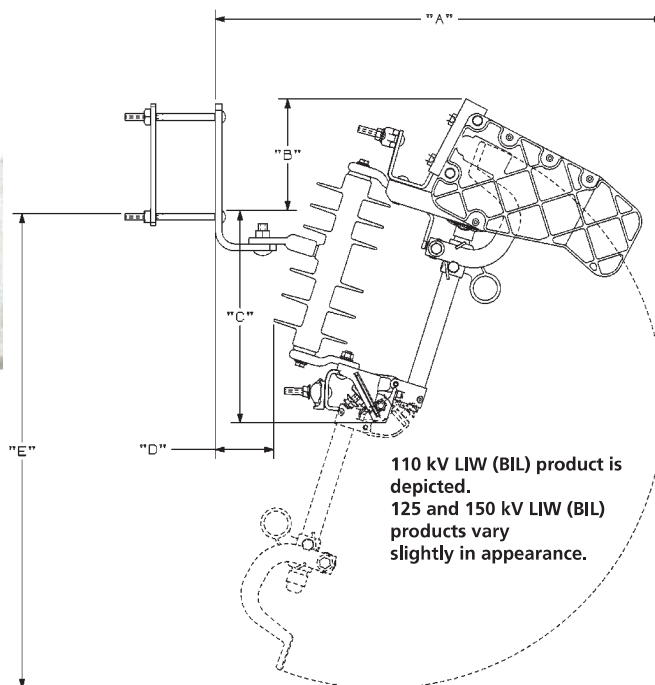
### Design

All design features and most components of the loadbreak unit are identical to those incorporated in the Type C-Polymer standard cutout. The loadbreak portion of the Type C-Polymer Loadbreak cutout is a heavy duty, reliable load interrupter that provides a positive visible loadbreak. A common loadbreak mounting assembly will accept the Chance Type C-Polymer 100 amp and 200 amp loadbreak fuseholders or a 300 amp loadbreak disconnect blade. The Type C-Polymer LOADBREAK fuseholder is not designed to be interchangeable with any other manufacturer's cutout.

### Ratings/Specifications

15kV Type C-Polymer loadbreak cutout has a maximum design voltage rating of 15kV. There are no voltage restrictions on application to grounded wye, ungrounded wye, or delta systems having maximum operating voltages (line to line) equal to or less than the cutout maximum design voltage rating.

15/27 kV and 20/34.5 kV Type C-Polymer loadbreak cutouts have maximum design slant voltage ratings. These cutouts



### Dimensions

kV LIW (BIL)	A	B	C	D	E
110	24 <sup>13</sup> / <sub>16</sub> " 630 mm	6 <sup>3</sup> / <sub>8</sub> " 162 mm	11 <sup>5</sup> / <sub>8</sub> " 295 mm	3 <sup>1</sup> / <sub>4</sub> " 82 mm	26 <sup>5</sup> / <sub>16</sub> " 668 mm
125	27 <sup>3</sup> / <sub>4</sub> " 704 mm	7 <sup>13</sup> / <sub>16</sub> " 199 mm	13 <sup>1</sup> / <sub>4</sub> " 337 mm	2 <sup>7</sup> / <sub>8</sub> " 72 mm	31 <sup>7</sup> / <sub>16</sub> " 798 mm
150	27 <sup>3</sup> / <sub>4</sub> " 704 mm	7 <sup>13</sup> / <sub>16</sub> " 199 mm	13 <sup>1</sup> / <sub>4</sub> " 337 mm	2 <sup>7</sup> / <sub>8</sub> " 72 mm	31 <sup>7</sup> / <sub>16</sub> " 798 mm

are to be used on systems which have phase-to-ground voltages no greater than the value listed to the left of the slant (/) and which have phase-to-phase voltages no greater than the value listed to the right of the slant.

Fuseholders and mounting assemblies from other manufacturers' loadbreak cutouts are not interchangeable with Chance loadbreak cutouts. Likewise, Chance fuseholders and mountings are not interchangeable with other manufacturers' loadbreak cutouts.

### Operation

The self-contained loadbreak device enables the lineman to interrupt load current by means of a simple hookstick operation. To break the current, the lineman inserts a hookstick into the operating ring and rapidly opens the device. Upon opening, a spring-loaded stainless steel blade mechanism snaps out through a gray arc chute and elongates, cools and extinguishes the confined arc. The loadbreaking operation is independent of the operating speed of the lineman. The fuse remains undamaged. No special or portable tools are required to operate the unit. In the open position, the fuseholder or blade hangs in an approximate vertical position for the visible-break.



## Type C-Polymer LOADBREAK Cutouts

### Specifications and Ordering Information

All Type C Cutouts meet or exceed ANSI/NEMA specifications.

#### 15kV - 110kV LIW (BIL) RUS LISTED

*Base Catalog No.	*Option suffixes below	Maximum Design Voltage	Nominal System Voltage	Continuous Current (Amps)	Number of Operations	Interrupt Capacity (Asym Amps)	Leakage to Ground Metal to Metal (minimum)		*Weight (lb./kg.)	Replacement Fusetube Cap/ Cap Assembly	Arc Shortening Rod
CP730112	1 2 3	15 kV	Thru 14.4 kV	100	200	10,000	12.6"	319 mm	15.1/6.8	P7001535P	No
CP730114	1 2 3	15 kV	Thru 14.4 kV	100	200	16,000	12.6"	319 mm	15.2/6.9	E7001767P	Yes <sup>†</sup>
CP730143	1 2 3	15 kV	Thru 14.4 kV	200	200	12,000	12.6"	319 mm	15.8/7.2	E7002146P	Yes <sup>†</sup>
CP730133	1 2 3	15 kV	Thru 14.4 kV	300	50	12,000**	12.6"	319 mm	15.4/7.0	P7001535P	N/A

See page 10AA-14 for Arrester Cutout Combinations  
 See page 10AA-15 for Accessories.  
 See page 10AA-16 for Complete Catalog Numbering

#### 15/27kV

##### LIW (BIL)

CP730211	1 2 3	15/27 kV	125 kV	No Restrictions thru 14.4kV; <sup>†</sup> 20.8 thru 24.9kV	100	200	8,000	17.1"	420 mm	15.5/7.0	P7001535P	No
CP730213	1 2 3	15/27 kV	125 kV		100	200	12,000	17.1"	420 mm	15.6/7.1	E7001768P	Yes <sup>†</sup>
CP730242	1 2 3	15/27 kV	125 kV		200	200	10,000	17.1"	420 mm	16.2/7.4	E7002479P	Yes <sup>†</sup>
CP730243	1 2 3	15/27 kV	125 kV		200	200	12,000	17.1"	420 mm	16.2/7.4	PSE7002706	Yes <sup>†</sup>
CP730342	1 2 3	15/27 kV	150 kV		200	200	10,000	23.6"	600 mm	15.9/7.2	E7002479P	Yes <sup>†</sup>
CP730343	1 2 3	15/27 kV	150 kV		200	200	12,000	23.6"	600 mm	15.9/7.2	PSE7002706	Yes
CP730233	1 2 3	15/27 kV	125 kV		300	50	12,000**	17.1"	420 mm	15.8/7.2	P7001535P	N/A
CP730333	1 2 3	15/27 kV	150 kV		300	50	12,000**	23.6"	600 mm	15.5/7.0	P7001535P	N/A

#### 20/34.5kV - 150kV LIW (BIL)

CP730311	1 2 3	20/34.5 kV	No Restrictions thru 14.4kV;	100	100	8,000	23.6"	600 mm	15.2/6.9	P7001535P	No
CP730313	1 2 3	20/34.5 kV	<sup>†</sup> 20.8 thru 34.5kV	100	100	12,000	23.6"	600 mm	15.3/6.9	E7001768P	Yes

\*Adjust total weight when selecting Options    \*\*Momentary rating — Solid blade    †Must use removable buttonhead fuse links.

†For application on single-phase to neutral circuits with phase-to-ground voltages not exceeding the value to the left of the slant; and for application on three-phase solidly-grounded-wye systems with solidly-grounded loads with line-to-line voltages not exceeding the value to the right of the slant.

#### \*Option Suffix 1 Terminal Variations

Suffix 1	Description	*Weight (lb./kg.)
P	Parallel-groove clamps	0.33/0.15
E	Small eyebolts	0.16/0.07
L	Large eyebolts	0.31/0.14
R	Lower PG Clamp Rotated 90°	0.33/.015

Must specify one selection for Option 1.

#### \*Option Suffix 2 Bracket Variations

Suffix 2	Description	*Weight (lb./kg.)
B	NEMA Heavy Duty "B" bracket for crossarm (1½" bolt)	2.84/1.29
X	Extended type bracket for crossarm (Horizontal section is 2⅝" longer than Type B bracket)	3.75/1.70
D	D-shape bracket (pole)	7.67/3.48
Z	No bracket (must be used with M in Option 3)	—
Blank	No bracket (cannot use with M in Option 3)	—
V	Easy-On Bracket for crossarm (Height: 4⅛" to 5½" Width: 2¾" to 4")	2.9/1.32

#### \*Option Suffix 3 Mechanical Assist Fuseholder

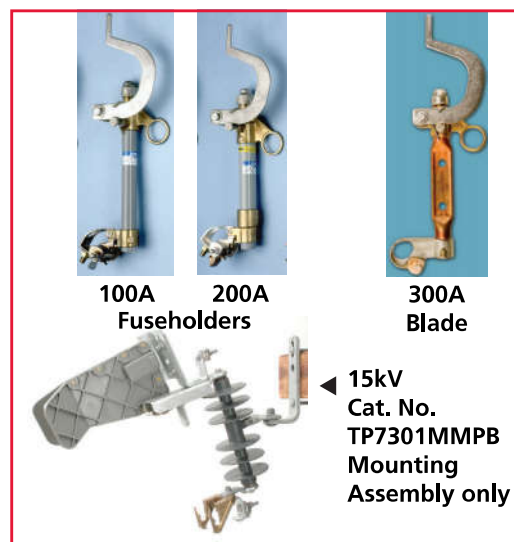
Suffix 3	Description
Blank	No option (may <u>not</u> be used with Z in Option 2)
M	Mechanical Assist Fuseholder (may <u>not</u> be used with Blank in Option 2)
F	Fargo cutout cover (may <u>not</u> be used with Blank in Option 2)
S	Anti-corrosion stainless steel/copper alloy cutout

## LOADBREAK Fuseholders and Mounting Assemblies

### 15kV - 110kV LIW (BIL)

Cutout Base Catalog Number	Fuseholder/ Blade Catalog Number	Fuseholder/ Blade Weight	Mounting Assembly *Base Catalog Number	*Mounting Assembly Weight
CP730112	T730112T	3.3 lb./1.5 kg.	TP7301MM	10.0 lb./4.5 kg.
CP730114	T730114T	3.5 lb./1.6 kg.		
CP730143	T730143T	4.1 lb./1.9 kg.		
CP730133	T730133T	3.6 lb./1.6 kg.		

\*Mounting assembly Catalog Number must include suffix for terminal variation. Adjust total weight when selecting Option suffixes above.

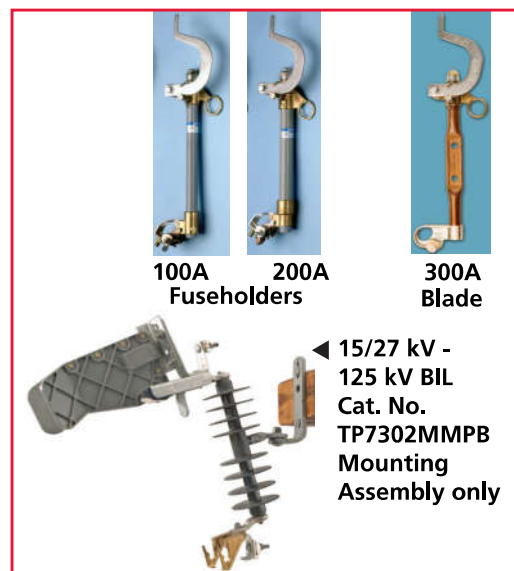


### 15/27kV

#### LIW (BIL)

CP730211	T730211T	3.6 lb./1.6 kg.	125 kV	TP7302MM	11.1 lb./5.0 kg.
CP730213	T730213T	3.8 lb./1.7 kg.	125 kV	TP7302MM	11.1 lb./5.0 kg.
CP730242	T730242T	4.4 lb./2.0 kg.	125 kV	TP7302MM	11.1 lb./5.0 kg.
CP730243	T730243T	4.4 lb./2.0 kg.	125 kV	TP7302MM	11.1 lb./5.0 kg.
CP730342	T730342T	4.4 lb./2.0 kg.	150 kV	TP7303MM	11.5 lb./5.2 kg.
CP730343	T730343T	4.4 lb./2.0 kg.	150 kV	TP7303MM	11.5 lb./5.2 kg.
CP730233	T730233T	4.0 lb./1.8 kg.	125 kV	TP7302MM	11.1 lb./5.0 kg.
CP730333	T730333T	4.0 lb./1.8 kg.	150 kV	TP7303MM	11.5 lb./5.2 kg.

\*Mounting assembly Catalog Number must include suffix for terminal variation. Adjust total weight when selecting Option suffixes above.



### 20/34.5kV - 150kV LIW (BIL)

CP730311	T730231T	3.6 lb./1.6 kg.	TP7303MM	11.5 lb./5.2 kg.
CP730313	T730233T	3.8 lb./1.7 kg.		

\*Mounting assembly Catalog Number must include suffix for terminal variation. Adjust total weight when selecting Option suffixes above.



**Replacement Arc Chute Interrupter**  
Cat. No. T7300080  
(1.2 lb. / 0.54 kg.)

